

Viola

CHOR. Vivace



6



11



16



21



26



31



36



41



46



51



56



Christoph Graupner
(1683 – 1760)

Himmels Sonne, Seelen Wonne

Kantate

für Soli

Chor

Streicher

und B.c.

VIOLA

Edition Musica Rinata
3.170.05

VIOLA

Himmels - Sonne, Seelen - Wonne

Christoph Graupner
1683 - 1760

Choral



5



REZITATIV (T.9-19) tacet

20



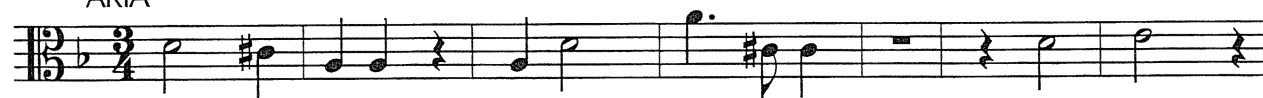
REZITATIV (T. 27-30) tacet

31



REZITATIV (T. 35-39) tacet

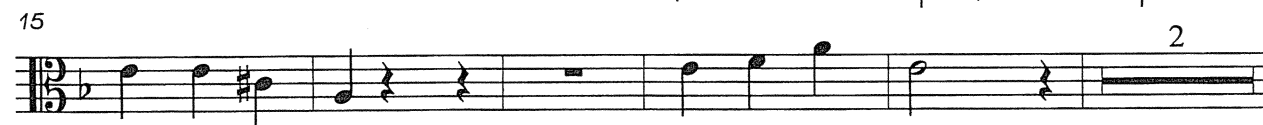
ARIA



8



15



22



ARIA Viola

Musical score for Viola ARIA, measures 1-20. The score is written in bass clef with a key signature of one flat (B-flat) and a common time signature (C). The music features a variety of rhythmic patterns, including eighth and sixteenth notes, and rests. Measures 1, 3, 5, 7, 9, 12, 14, 16, 18, and 20 contain musical notation, while measures 2, 4, 6, 8, 10, 11, 13, 15, 17, and 19 are marked with rests. The notation includes slurs, accents, and dynamic markings such as 'f' (forte) and 'p' (piano).

da capo

REZITATIV tacet

ARIA tacet