

**Passionsmusik**  
nach dem  
**Evangelisten Lucas.**

*Johann Sebastian Bach (1685-1750)*

*N<sup>r</sup> 246*

---

*Korrektur von*  
*Ernst Naumann (1832-1910)*

**Viola**



# Inhalt

## *Erster Theil.*

1- Einleitungschor. Furcht und Zittern, Scham und Schmerzen . . . . .	1
7- Choral. Stille, stille! ist die losung der Gottlosen . . . . .	2
13- Arie für Sopran. Dein leib, das Manna meiner Seele . . . . .	2
15- Arie für Alt. Du giebst mir Blut, ich schenk' dir Thränen . . . . .	3
32- Evangelium. (Evangelist, Chor der Jünger Jesu, Jesus.) Da aber sahen, die um ihn waren . . . . .	5
39- Arie für Tenor. Den Fels hat Moses' Stab geschlagen . . . . .	6

## *Zweiter Theil.*

41- Evangelium. (Evangelist, Chor der Männer.) Die Männer aber . . . . .	7
43- Evangelium. (Evangelist, Chor der Aeltesten, Jesus.) Und viel and're Lästerungen . . . . .	7
45- Evangelium. (Evangelist, Jesus, Chor der Aeltesten, Pilatus.) Er sprach zu ihnen . . . . .	8
49- Evangelium. (Evangelist, Chor des Volkes.) Sie aber hielten an . . . . .	8
50- Arie für Tenor. Das Lamm verstummt vor seinem Scherer . . . . .	8
55- Evangelium. (Evangelist, Chor des Volkes, Pilatus.) Denn er musste ihnen Einen . . . . .	9
58- Arie für zwei Soprane und Alt. Weh und Schmerz . . . . .	10
61- Evangelium. (Evangelist, Chor des Volkes, Chor der Kriegsknechte.) Und sie theilten seine Kleider . . . . .	11
70- Arie für Sopran. Selbst der Bau der Welt erschüttert . . . . .	12
78- Arie für Tenor. Lasst mich ihn nur noch einmal küssen . . . . .	13



## 1- CHOR.

3

5

7

9

11

13

15

17

19

22

26

30

*Da Capo.*

2- EVANGELIUM: tacet

## 3- CHORAL.

59

4- EVANGELIUM: tacet

5- CHORAL: tacet

6- EVANGELIUM: tacet

2  
7- CHORAL.



95



8- EVANGELIUM & CHOR: tacet

9- CHORAL: tacet

10- EVANGELIUM: tacet

11- CHORAL.



12- EVANGELIUM: tacet

13- ARIE.



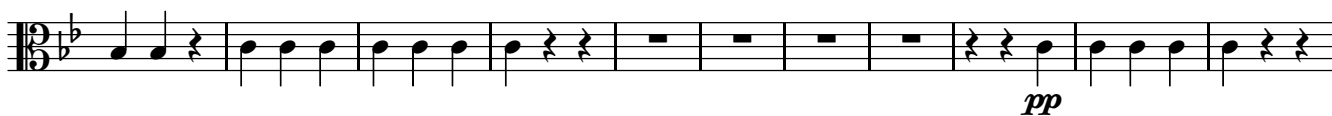
206



215



227



238



248



259



277



286

Musical staff for measure 286, featuring a piano (*pp*) dynamic marking. The staff contains a sequence of notes and rests, including a half note followed by a series of eighth notes.

296

Musical staff for measure 296, ending with a double bar line and a fermata. The dynamic marking is *Da Capo*. A fingering number '5' is indicated above the final note.

14- EVANGELIUM: tacet

15- ARIE.

Musical staff for measure 300, marked *pizzicato*. The staff shows a series of notes with stems pointing downwards, characteristic of a pizzicato technique.

321

Musical staff for measure 321, showing a sequence of notes and rests.

326

Musical staff for measure 326, showing a sequence of notes and rests.

331

Musical staff for measure 331, featuring a second ending bracket labeled '2'.

338

Musical staff for measure 338, showing a sequence of notes and rests.

343

Musical staff for measure 343, marked *coll' arco* and *p*. The staff shows a series of notes with stems pointing upwards, characteristic of an arco technique.

347

Musical staff for measure 347, showing a sequence of notes and rests.

350

Musical staff for measure 350, ending with a double bar line and a fermata. The dynamic marking is *Da Capo*. A fingering number '2' is indicated above the final note.

16- EVANGELIUM: tacet

4  
17- CHORAL.

Musical notation for Choral section 17, measures 4-11. The key signature is one sharp (F#) and the time signature is common time (C). The melody consists of quarter and half notes with some slurs and accents.

378

Musical notation for Choral section 17, measures 12-19. The key signature is one sharp (F#) and the time signature is common time (C). The melody continues with quarter and half notes, ending with a double bar line.

18- EVANGELIUM: tacet

19- CHORAL.

Musical notation for Choral section 19, measures 20-27. The key signature is two flats (Bb, Eb) and the time signature is 3/4. The melody features quarter and eighth notes.

423

Musical notation for Choral section 19, measures 28-35. The key signature is two flats (Bb, Eb) and the time signature is 3/4. The melody continues with quarter and eighth notes.

20- EVANGELIUM: tacet

21- CHORAL: tacet

22- CHOR.

Musical notation for Choral section 22, measures 36-43. The key signature is two flats (Bb, Eb) and the time signature is common time (C). The first part consists of seven measures of rests, with fingerings 4, 4, 4, 4, 4, 3, 4 written above. The second part is a melodic phrase starting with a quarter note.

482

Musical notation for Choral section 22, measures 44-51. The key signature is two flats (Bb, Eb) and the time signature is common time (C). The melody consists of quarter and eighth notes.

492

Musical notation for Choral section 22, measures 52-59. The key signature is two flats (Bb, Eb) and the time signature is common time (C). The first part is a melodic phrase ending with a half note, followed by four measures of rests with fingerings 4, 4, 4, 5 written above.

516

Musical notation for Choral section 22, measures 60-67. The key signature is two flats (Bb, Eb) and the time signature is common time (C). The first part is a melodic phrase with slurs and accents, followed by four measures of rests with fingerings 3, 3, 3, 3 written above.

23- CHORAL: tacet

24- EVANGELIUM: tacet

25- CHORAL.



555



26- EVANGELIUM: tacet

27- CHORAL: tacet

28- EVANGELIUM: tacet

29- CHORAL.



591



30- EVANGELIUM: tacet

31- CHORAL.



615



32- Evangelium.

CHOR. (Die Jünger Jesu.)



629



633



637



6  
33- CHORAL.

Musical notation for Choral section 33, measures 6-12. The staff is in G major (one flat) and common time (C). The melody consists of quarter and eighth notes, with some rests.

656

Musical notation for Choral section 33, measures 13-19. The staff is in G major (one flat) and common time (C). The melody continues with quarter and eighth notes, ending with a double bar line.

34- EVANGELIUM: tacet

35- CHORAL: tacet

36- EVANGELIUM: tacet

37- CHORAL.

Musical notation for Choral section 37, measures 20-26. The staff is in G major (one flat) and common time (C). The melody features quarter and eighth notes, with a repeat sign at the end of the first phrase.

723

Musical notation for Choral section 37, measures 27-33. The staff is in G major (one flat) and common time (C). The melody continues with quarter and eighth notes, ending with a double bar line.

38- EVANGELIUM: tacet

39- ARIE.

Musical notation for Arie section 39, measures 34-40. The staff is in G major (one flat) and common time (C). The melody consists of quarter notes with rests, creating a rhythmic pattern.

745

Musical notation for Arie section 39, measures 41-47. The staff is in G major (one flat) and common time (C). The melody features quarter notes with rests, followed by a sequence of eighth notes.

752

Musical notation for Arie section 39, measures 48-54. The staff is in G major (one flat) and common time (C). The melody continues with quarter notes and eighth notes, including a flat sign.

758

Musical notation for Arie section 39, measures 55-61. The staff is in G major (one flat) and common time (C). The melody consists of quarter notes with rests, followed by eighth notes.

766

Musical notation for Arie section 39, measures 62-68. The staff is in G major (one flat) and common time (C). The melody features quarter notes with rests, a flat sign, and a fermata over a measure.

783

Musical notation for Arie section 39, measures 69-75. The staff is in G major (one flat) and common time (C). The melody consists of quarter notes with rests, followed by eighth notes.

790

Musical notation for Arie section 39, measures 76-82. The staff is in G major (one flat) and common time (C). The melody features quarter notes with rests, eighth notes, a flat sign, and a fermata over a measure. A double bar line is followed by the text 'Da Capo.' and a fermata over a final measure.

40- CHORAL: tacet

# Nach der Predigt.

41- Evangelium.

Musical notation for the first system of '41- Evangelium.' It consists of a grand staff with two staves. The key signature has two flats (B-flat and E-flat), and the time signature is common time (C). The music begins with a treble clef and a bass clef. The first staff contains a melodic line with eighth and sixteenth notes, and the second staff contains a bass line. A dynamic marking 'p' (piano) is placed below the second staff.

6

Musical notation for the second system of '41- Evangelium.' It continues the grand staff from the first system, maintaining the key signature and time signature.

12

Musical notation for the third system of '41- Evangelium.' It includes the label 'CHOR. (Die Männer.)' above the staff. The music features a change in rhythm with eighth notes and rests.

18

Musical notation for the fourth system of '41- Evangelium.' It continues the choral part with eighth notes and rests.

42- CHOR.

Musical notation for the first system of '42- CHOR.' It consists of a grand staff with two staves. The key signature has two flats, and the time signature is common time. The music is primarily composed of quarter and half notes.

32

Musical notation for the second system of '42- CHOR.' It continues the choral part with quarter and half notes.

40

Musical notation for the third system of '42- CHOR.' It concludes the choral part with quarter and half notes.

43- Evangelium.

Musical notation for the first system of '43- Evangelium.' It includes the label '7' above the staff and 'CHOR. (Die Ältesten.)' above the staff. The music starts with a treble clef and a bass clef, and a common time signature.

59

Musical notation for the second system of '43- Evangelium.' It continues the choral part with quarter and half notes.

64

Musical notation for the third system of '43- Evangelium.' It includes the number '10' above the staff. The music features a change in key signature to one flat (B-flat) and common time.

78

Musical notation for the fourth system of '43- Evangelium.' It includes the label 'CHOR. (Die Ältesten.)' above the staff. The music is in a key signature of one sharp (F#) and common time.

83

Musical notation for the fifth system of '43- Evangelium.' It continues the choral part in the key signature of one sharp and common time.

44- TACET

45- Evangelium.

**3** (CHOR.) (Die Ältesten.)

105

110

119

CHOR. (Die Ältesten.)

125

46- CHORAL: tacet

47- EVANGELIUM: tacet

48- CHOR.

153

49- Evangelium.

**3** CHOR. (Das Volk.)

166

170

174

50- ARIE.

202

210

217



226



*Da Capo.*

51- EVANGELIUM: tacet

52- CHORAL: tacet

53- EVANGELIUM: tacet

54- CHOR.



293



304



55- EVANGELIUM.

**5** CHOR. (Das Volk.)

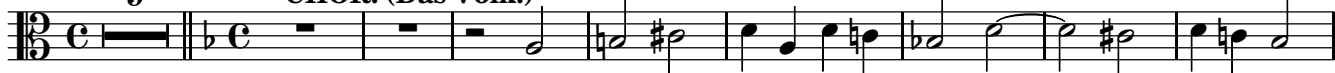


325



331

**9** CHOR. (Das Volk.)



348



357



365

**20**



56- CHOR.



402



411



57- EVANGELIUM: tacet

10  
58- ARIE.

436

441

446

451

*Da Capo.*

59- EVANGELIUM: tacet

60- CHOR.

498

506

514

61- Evangelium.

7 CHOR. (Das Volk.)

534

539

5 CHOR. (Die Kriegsknechte.)

549

62- CHORAL: tacet

63- EVANGELIUM: tacet

64- CHORAL: tacet

65- EVANGELIUM: tacet

66- CHOR.

651

67- EVANGELIUM: tacet

68- CHOR.

678

687

69- EVANGELIUM: tacet

12  
70- ARIE.

Un poco allegro.

708

714

718

724

730

734

740

745

750

71- EVANGELIUM: tacet

72- SIONFONIA: tacet

73- CHOR.

793



74- SINFONIA da capo: tacet

75- EVANGELIUM: tacet

76- CHOR.



814



77- EVANGELIUM: tacet

78- ARIE.

*con molto lamento*

847



858



866



79- EVANGELIUM: tacet

80- CHOR.



Copyright © 2014 Jean-Charles Malahieude &lt;lilyfan@orange.fr&gt;

Sheet music from <http://www.cpd1.org> typeset using [www.LilyPond.org](http://www.LilyPond.org) version 2.18.0 on 2014-4-6.

Source: Breitkopf &amp; Härtel, 1898. Plate B.W. XLV

*Free to download, with the freedom to distribute, modify and perform.*Licensed under the Creative Commons Attribution 3.0 License, for details see: <http://creativecommons.org/licenses/by/3.0>